



**Fauna Rescue Whitsundays
Association Inc**

NEWSLETTER

May 2009 Issue 47

Fauna Rescue Whitsunday

Urgent Attention - Secretary Position Vacant

We have a vacancy for the role of Secretary which we are required (by Office of Fair Trading) to fill for the organisation to continue.

The secretary's functions include, but are not limited to—

- (a) calling meetings of the association, including preparing notices of a meeting and of the business to be conducted at the meeting in consultation with the president of the association;
- (b) keeping minutes of each meeting; and
- (c) keeping copies of all correspondence and other documents relating to the association;

For a complete overview, please refer to section 2.5 of the policy and procedures manual and section 17 onwards of the constitution. See <http://www.frw.org.au/info.html>

Should you require further information and or wish to express your interest, please contact Rebecca MacRae via email: firstagency@bigpond.com or via phone 0427 675 507.

All applications and expressions of interest need to be in by 12th June 2009

Inside this issue:

<i>Special Notice</i>	1
<i>Up & Coming Events</i>	1
<i>Welcome new members</i>	1
<i>Wombaroo Price Rise</i>	1
<i>President's Report</i>	2
<i>Positions Vacant</i>	2
<i>Tips & Strange Things</i>	2
<i>What's it called?</i>	2
<i>Snake Handling Course</i>	2
<i>Rotary Raffle</i>	3
<i>Story All fluff & feet</i>	3
<i>Story FRW Hotline Again</i>	3
<i>Committee Activity Report</i>	4
<i>State & Federal Members</i>	4
<i>Volunteer Forum</i>	4
<i>Volunteers Lunch</i>	4
<i>Editor's Comment</i>	5
<i>Rotary Raffle Dinner</i>	5
<i>Rehabilitation Manuals</i>	5
<i>Forms</i>	6, 7, 8, 9, 10,
<i>Wildlife Carer Acknowledgement</i>	
<i>Application to become a WildlifeCarer</i>	
<i>Application to become a Species Liaison Officer</i>	
<i>Fauna Release Site Application</i>	
<i>Contacts for Members</i>	11

UP AND COMING EVENTS

10th June, Wednesday 5.30pm at QPW Mandalay Rd.

Introduction to the FRW HOTLINE for old and new members wishing to find out more about and help on our hotline.

18th July, Saturday 3 pm **Fauna Rescue Whitsundays Get Together** at Di & Col's Place, 25 Botanica Drive, Woodwark Bay.
Please bring your everything includes finger food for the BBQ, drinks and chairs.

WELCOME TO OUR NEW MEMBER

Peter Basso is back in the area and has rejoined.

WOMBAROO

A word from Linden—Just to let you all know that Wombaroo have increased their prices in Bulk Macropod milk. .7 will increase from \$4.20 per litre to \$4.35 per litre, .6 will increase from \$5.05 per litre to \$5.40 per litre.

I now have re-usable heat pads in stock and also some items free of charge, syringes, baby bottles and other assorted articles. Please phone me for more information Linden 4946 1198

Linden has been quietly working for years behind the scenes, ordering, weighing, bagging, selling, pricing, invoicing, stock taking as well as looking after many birds and critters, snakes and the like and giving advice to others. Linden we all appreciate your effort and time. Thank you

PRESIDENT'S REPORT

Dear Members,

Thank you to those of you who attended the AGM. I would like to thank Rebecca McRae for continuing on the committee this year, and welcome Cathie Shoemsmith, Col Forster & Lola Mudie.

Unfortunately, due to a family emergency, I am away for 2 weeks as of Tuesday, so will be unable to deal with anything until my return. For urgent matters please contact Cathie or one of the other committee members. Otherwise feel free to email me and I will get back to you as soon as I can.

Any enquiries or advice needed regarding birds or koalas can be directed to either Cathie or Linden.

Regards
Jacqui

POSITIONS BECOMING VACANT

POSSUM LIAISON OFFICER & MACROPOD LIAISON OFFICER

These positions are presently held by Lynne Clarke and Cathie Shoemsmith respectively. Lynne has advised the committee she expects to be leaving the Whitsundays later this year and Cathie has indicated she will not be available to continue in her role from approximately December 2009.

In order to ensure a smooth transition the committee is currently seeking applications for the two positions of Possum Liaison Officer and Macropod Liaison Officer. We encourage all members with an interest in applying for either role to complete the attached Application form and forward it to the Secretary.

TIPS AND STRANGE THINGS

Hurling.

This term describes when a joey sneezes or coughs milk out of its nostril. This occurs because of the rate at which the milk is sucked exceeds the rate at which the milk is swallowed. If this happens tip the joey upside down and rub its nostrils. This will cause the joey to sneeze and expel the milk out of its airways. Repeat this procedure until you can hear that the airways are clear. Usually this is related to the size of the hole and the angle at which you hold the bottle. Extract from "What it takes to be a Wildlife Carer" by Eleanor Pollock.

Tintillation.

This is a normal part of behaviour and is usually seen when macro-pods meet each other for the first time. The head is thrust forward and the whole head shakes or quivers, sometimes its the whole of the body that shakes.

Agile wallabies because of their very nervous disposition are rarely seen in zoos.

Big Greasy Butterfly *Cressida Cressida*

After mating the male deposits a sphragis beneath the female's abdomen which cover her genitalia.

A kind of butterfly chastity belt.

It is one of the commonest butterflies in the tropics

Q Fever

is a vaccine preventable disease caused by a small bacterium *Coxiella burnetti* and has an incubation period of two to three weeks. This disease is contracted from animals.

The main carriers of the disease are farm animals such as cattle, sheep and goats, but also include kangaroos, wild pigs, camels, llamas, alpacas, rodents and cats.

Further info see Qld Health on

http://access.health.qld.gov.au/hid/InfectionsandParasites/BacterialInfections/qFever_fs.asp

More info <http://www.qfever.org/>

Possums, Wallabies and Oats.

The goal most of us have is to rehabilitate wildlife - which means accustoming them to their natural wild diet. This diet will see them less likely to come into harm's way. A possum on the ground seeking oats spilled from stock feed is a possum that will be eaten by a fox or attacked by dogs.

Oats contain highly fermentable carbohydrate. The natural diet of leaves, etc has longer chain, poorly fermentable carbohydrates (also known as cellulose, or plant walls). A diet that has fermentable carbohydrates in it will alter the gut flora and end up killing the good bacteria that break down plant walls. The bacteria that likes a carbohydrate substrate is... *Clostridium perfringens*, the cause of sudden death/bloody diarrhoea, also known as enterotoxaemia.

Jim Pollock found this to be a common cause of death in kangaroos and possums in his paper in one of the previous carer conferences.

Thus by feeding oats you are feeding a diet that will potentially cause an overgrowth of a deadly bacteria and a diet that may predispose to other gut problems (diarrhoea, bloat, etc).

1. add Wombaroo high protein supplement every time to any fruit or vegetables offered
2. moths, crickets, beetles, cooked chicken breast to the diet.

By Dr Anne Fowler. A reply to a question on a possum being given oats on Ozark.

WHAT'S IT CALLED?

A baby swan is called a cygnet, a mother swan a pen and a father swan a cib.

SNAKE HANDLING COURSE

I will be holding a venomous snake handling course in Townsville on Tuesday 2nd June. Anyone wanting to attend can contact me for further details on 0419-788-167 or by email to

gkriesel@bigpond.net.au

Gavin Kriesel



ROTARY RAFFLE

This year FRW collected 800 raffle tickets to sell.

Members who responded to my article in the newsletter thank you. Thanks to those of you who bought complete books of tickets, as some of us tend to do, it's easier than trudging the streets. One who did (trudge the streets) was Jasmin who is not a FRW member but wanted to do something for our native wildlife, Jasmin sold 7 books in the first two weeks. Thank you Jasmin much appreciated.

We had a lot of tickets this year so a decision was made to sell the tickets at stalls in Proserpine and Cannonvale. I would like to give Bill a gold star for all the time he put in selling these tickets.

I would like to thank our little team of Lola, Bill, Doreen and Di for selling at Centro, Coles and Woolworths. Pictured above is Di at Centro wearing the latest wallaby hair coiffure. I would like to thank you all very much on behalf of FRW.

Tickets were collected the day they were issued so we could sell them before the bulk of the tickets were distributed to other organisations, thus giving us an advantage, if sold promptly. This year because a greater number of not for profit organisations were seeking tickets, as there is a limited number of tickets, some groups missed out altogether.

The tickets are all printed for us, the incredible prizes are all organised, all done for members of not for profit groups.

The Rotary Community Raffle is a yearly occurrence, and with not much effort on our part other than to sell the tickets we reap the rewards.

We made \$1835 which is an excellent contribution to FRW coffers this was a little short of our goal of \$2,000 but gives us a challenge for next year.

Donations totalling \$47.65 were received, and \$172 worth of 'Rescue' books sold. Not a bad job folks thank you.

Sandy C

ALL FLUFF AND FEET

I came home the other day to a tiny black ball of fluff and feet. Di said "I think it's a Buff Banded Rail". It had a lot to say for itself, but didn't look like any Buff Banded Rail I'd ever seen! I had a friend with me, a real nature buff, and he agreed with Di's assessment. It was quite funny as Di produced the book she had been guessing from. "Look. It looks like that photo but it is more like this one of a Bubb Banded Rail." As we pondered this my nature buff mate said "There is no such thing."

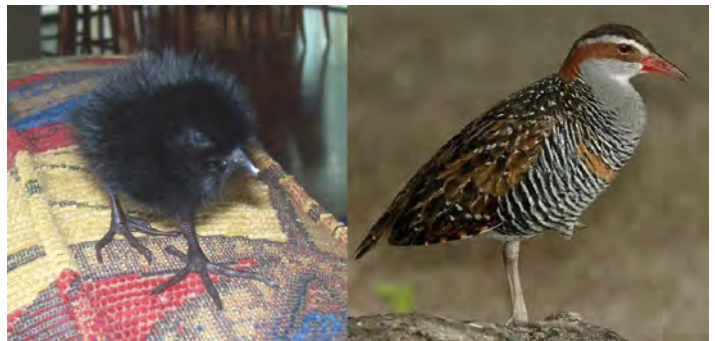
"Eh?" we chorused. "Bubb Banded Rail." "There is no such thing," he drawled. "Eh? Oh yeah, could be a typo eh?" The photo was almost a perfect fit, just substitute double *b* with double *r*. Even the weight at 11grams fit.

Buff Banded Rails are described as *shy and retiring* but that is not the Rail I know. Even though they are *shy and retiring* they must adapt easily to human environments. They are commonly seen around resorts on offshore islands and we even had one in a stamp size garden in Darwin. It lived by the spa. I've yet to see one fly. Whenever encountered I have enjoyed the adult, and the hatchling is so cute!

If you still believe in Santa, the Tooth Fairy and that every rescue turns out right stop reading here.

Unfortunately the little fellow wasn't so good in the morning and didn't make it through the next day. Di was devastated. What if I'd done this? Perhaps I shouldn't have done that. But maybe I could have.....

It is hard to accept that you can't save them all and when they're so cute even more so. But then it's all just part of being a carer. But maybe I could have.....??



All fluff & feet at 11grams
Photo by Di Jessop

Like the Buff Banded Rail I know.

Article by Col Forster & Di Jessop

GOOD MORNING FAUNA RESCUE HOTLINE AGAIN.

A short piece I wrote called *Good Morning Fauna Rescue Hotline* was published in last months newsletter. In it I used the sentence *Perhaps catching and hogtying another mauled wallaby – now that was fun!* On seeing this in print I realised that it may be taken (*hogtying* in particular) literally instead of figuratively. This was not my intention and of course the reference to *fun* was sarcasm, the incident I was visualising was no fun at all.

Perhaps a good time to revisit the actual incident?

It all began with a hotline call. We were advised that a neighbours dog had mauled a wallaby in the callers back yard and the caller wanted to know how to deal with the injured animal. It was still mobile, but badly injured. As it was in Cannonvale we put together a few items and were on the callers doorstep in less than 10 minutes.

The caller explained the situation and headed down his block whilst Di and I headed down the driveway next door to cut off the wallabies escape into the bush. Romping around in more than knee high grass mixed with lantana is not fun for the pursuers or the pursued. After several false starts we managed to catch the wallaby and wrapped it in a blanket. Yes, there was stress all round but I think we were panting harder than the wallaby. The corners of the blanket used in the capture were tied so that the animal was covered, secured, and restrained. The animal was a sizeable buck Agile, not huge, but larger than most females. I carried it to the car and within 5 minutes the vet had examined and euthanised it. As all carers know this is not fun and it seems a good time to thank the vets for a mostly thankless task.

Sometimes you look at your armoury of limited skills but lots of enthusiasm, a cardboard box, a pair of gloves, sheet, blanket, towels, etc then look at the animal you are to deal with and it seems that you may be trying to catch an elephant with a butterfly net..... Regardless we all go out there and do the best we can.

Col

COMMITTEE ACTIVITY REPORT

APRIL MAY 2009

POSSUM BOXES

The committee has placed an order with Proserpine High School for a further 18 possum boxes to be constructed by the woodworking students.

The boxes are primarily for possums that come into FRW care, however stocks permitting, they may be sold to members of the public at a cost of \$35.00 each.

HOTLINE CO-ORDINATOR

We are pleased to advise that Sandy Cleeland has been appointed as Hotline Co-ordinator. Sandy replaces Jacqui who has managed the Hotline service since it was first established. The committee wishes to thank Jacqui for her long term commitment to running the hotline and organising the roster, volunteers and hotline training.

APPLICATION PACKAGE

The pack contains Application forms - Carers, Species Liaison Officers, Releases sites and also a Statement of Acknowledgement. This process has been introduced with a view to having consistent, balanced and relevant selection criteria applied across the board to all FRW carers as well as providing a list of interested members for positions.

Active members who have renewed their membership will have received an application pack with their membership cards.

Please take the time to complete and return these forms.

STATE & FEDERAL MEMBERS

The website below is a handy tool to find contacts both State and Federal representing our area. Handy if anyone wishes to write about any issues affecting wildlife.

<http://www.yourvoiceinhouse.org.au/>

Thank you to

JAN JARRATT'S OFFICE

for printing of the hard copies of this newsletter.

VOLUNTEER FORUM

Thank you to Barb McLennan who represented Fauna Rescue on Thursday 14th May at the Volunteer Forum in the foyer of the Proserpine Entertainment Centre. There was quite a bit of interest. Including a very brief segment on Channel 7. Well done Barb.



VOLUNTEERS LUNCH

What a pleasant lunch, Miranda, Sandy and myself enjoyed on Friday the 15th of May. This was funded and supported by Jan Jarratt, Communities Services and the Council. There was a great cross section of local volunteers from a range of community groups. At our table were Marine Rescue and Whitsunday Lions. Some others present were CWA, Rotary Airlie Beach, Proserpine Community Center and many more. Great networking occurred. You could hear the buzz of conversation constantly around the room. The members at our table were interested in what and how we do what we do. The lunch was catered by the TAFE "Palmer's Restaurant", all facets of the meal from table service to cooking done by students from the Whitsunday Christian College on their first day and a very commendable job was done by all.

Thank you to all who were responsible for a most enjoyable couple of hours, the students, Jan Jarratt, Community Services and the Whitsunday Regional Council.

Lola

EDITOR'S COMMENT

I would like to give my thanks to the five hardworking outgoing members of the committee, Le-Anne Dinnie, Rebecca MacRae, Sue McLeod, Christine Petersen and Maren Matthew.

Rebecca was elected as secretary but because of her expanding work commitments stepped down but remained on the committee with Sue filling her vacancy as secretary. From the way Sue has spoken Rebecca put in place an easy to follow detailed system for the excessive amount of paper work the committee encounters. Rebecca has since decided to go back onto the committee for another term. I'm sure Christine has had an eye opening year. Thank you for your participation.

Maren began on the committee way back on the 26th June 2003 and has endured many a long committee meeting, she held many committee positions over the years.

Le-Anne has been Treasurer for three years and has done an excellent job of getting the books in order. When I was on the committee she was harassing us all, when things weren't as they should be, which I suspect she would still have been doing.

Thank you Sue for your three years hard slog, I worked with Sue seems like years ago towards the completion of the Constitution, the meetings called with the quorum of 21 how many times we did this, all to no avail. The OFT recommending the model rules so this was the way we went in the end, Hoorah success at last.

The Policy & Procedures Manual, Sue painstakingly compiled this manual, from materials supplied by Jacqui, Cathie, Gerry, Le-Anne, myself and others. This is a complete manual showing the way in which Fauna Rescue is and or should be operating.

Thank you to you all for all your hard work for Fauna Rescue. We all appreciate that you are very busy people who have sacrificed your valuable time to be on FRW's committee, thank you

ROTARY RAFFLE DINNER DRAW

The Rotary Annual Community Raffle was drawn Monday 18th of May at a Rotary dinner at the Reef Gateway Hotel. This was the Rotary raffle we all bought and sold tickets in earlier in the year.

An additional prize of \$1,000 was available to the organisation that sold first and second prize, \$500 was available for the third and fourth ticket drawn, provided a representative of that organisation was present at the draw. With this in mind Sandy and Geoff Cleeland, Di Jessop, and Col Forster togged up and went along. We had an enjoyable evening but unfortunately Fauna Rescue didn't sell the winning ticket so missed out on the additional \$1,000, but remember we do receive **all** the revenue from the tickets sold by us. Over \$44,000 was raised for community groups by the raffle.

As an organisation we did get a special mention on the night as we sold (I think it was) the fifth most tickets of an organisation based in Airlie. The most tickets were sold by Proserpine State Primary School P&C - a bit hard for us to compete with an organisation with that sort of a membership base!

It was interesting to be present at the draw. Mostly to meet all the people you already know, but didn't realise that they were involved in 'that' organisation. A great reminder of how many organisations rely on volunteers but how few volunteers there actually are out there doing the work!

The good news is that Rotary are already planning next years raffle, so we can all do it all over again.

Col..

REHABILITATION MANUALS

Australian Bird Rehabilitation Manual is an illustrated 165-page manual. It is the result of years of literature search and consulting with many rehabilitators both within WIRES and other rehabilitation organizations. It is suitable for both new and experienced foster carers, and indeed anyone caring for native birds. The aim of this manual is to be a quick-reference guide covering 60 species of birds. This manual is constantly revised and up-dated. Topics include identification, natural habitat, food in the wild, food in captivity for both chicks and adults, housing and handling, injuries and diseases, and release. Cost: \$25.00

Australian Wildbird Rescue Manual is aimed at promoting an exchange of information and flow of ideas between wildlife carers. This manual is intended as a companion to the "Australian Bird Rehabilitation manual", and is more 'hands on', describing how carers deal with rehabilitation problems - problems like how to reunite fledglings, whether birds can be persuaded to adopt orphans, and when and how to release them. There are sections on caring for baby birds, seabirds and estuary birds, precocial birds and ducks and ducklings. There is a separate section on problems and diseases most commonly experienced. Cost: \$20.00

Chick Identification Manual comes with over 200 colour photographs of chicks, nestlings and fledglings of native Australian birds and some introduced species. The photographs cover the different stages of development and the identification sheets and keys give more detailed information on weights, feathering, down, eye/foot/leg shape and colouring etc. Cost: \$23.00

Small Mammals of NSW Identification and Care Our smallest animals struggle to survive as the pressures of increasing population impact upon them. This manual includes information on Dasyurids including Antechinus, Bandicoots, Dunnarts, Phascogales, and Planigales. Rodents include our native Bush Rats, Swamp Rats, Water Rats and the tiny mice such as Hastings River Mouse, New Holland Mouse and many others and includes detailed descriptions on recognising the differences. Finally our smallest Gliders are included covering the Feathertail Glider, Squirrel Glider, Sugar Glider and the Pygmy Possum. Detailed information on feeding, nutrition and housing is included. Cost: \$20.00

These books are mainly for carers in NSW but most of the birds also occur in Qld. I have listed these few books which are available from Norma.

Postage per manual is \$2.40

Orders can be sent to:

Norma Henderson

49 Bakers Road Church Point

NSW 2105 or email: Norma_Henderson@bigpond.com

FAUNA RESCUE WHITSUNDAYS ASSOCIATION INC
ABN 60 931 156 282

WILDLIFE CARER
STATEMENT OF ACKNOWLEDGEMENT

I, (insert name).....have read the Environmental Protection Agency's "Code of Practice – Care of orphaned, sick or injured protected animals by wildlife care volunteers" and I agree to provide care in accordance with the Code.

I also agree to perform my role as a Carer in accordance with Fauna Rescue Whitsundays policies and procedures.

Name:

Signature:.....

Date:.....



Red Tailed Black Cockatoos at Conway Beach

Photo by Sandy C.

**FAUNA RESCUE WHITSUNDAYS ASSOCIATION INC
ABN 60 931 156 282**

APPLICATION TO BECOME A WILDLIFE CARER

Caring for native wildlife can be a very rewarding and educational experience. A carer's primary role is to rehabilitate wildlife so they can be returned to the wild.

There is a personal cost associated with caring so a discretionary income is necessary. The amount will vary depending on the species and number of animals cared for. FRW usually covers veterinary expenses incurred and offers a rebate of 10% on food supplies.

This is revised on an as needs basis according to the organisation's financial position.

Name:.....

Address:.....

Telephone: Home:..... Work:..... Mobile..... **Email:**.....

Type of residence:..... (e.g. Home unit, urban house, rural property)

What type of animal(s) do you wish to care for?.....

.....
(e.g birds, lizards, snakes, wallabies, possums, bandicoots)

Time available for caring: (eg 2hours each morning and evening)

Please give details of how much time you are able to commit to caring for wildlife. (Take into consideration all your other obligations such as work, family, social and recreational activities.) Even the busiest of people can still be wildlife carers as some animals do not require nearly as much time as others.

.....
.....
FRW has a network of carers to provide assistance and "babysitting" support caring during holidays and emergencies. As a rule it is not acceptable for rehabilitating fauna to be on premises with pets and/or children. However in some circumstances with careful planning their impact on wildlife may be eliminated. (This should be discussed with other experienced carers.)

Do you have pets? YES NO

Please list number and type.....

Do young children live at or frequent the property? YES NO

If you have had no previous experience as a carer, are you prepared to attend training?
YES NO (New recruits are very welcome and carer training is provided)

Please provide details of any previous experience as a wildlife carer:

.....
.....
.....
Details of training courses attended:

.....
Tertiary qualifications:.....

Other comments:



FAUNA RESCUE WHITSUNDAYS ASSOCIATION INC

ABN 60 931 156 282

APPLICATION TO BECOME A SPECIES LIAISON OFFICER

A species liaison officer will need to be able to demonstrate that they have at least 2 years practical experience caring for the selected species. Persons with previous experience who are no longer caring may also apply.

Applicants will need good people skills and sufficient time to commit to the role.

There may be expenses incurred performing this role such as telephone calls and fuel costs. Expenses may be reimbursed subject to the discretion of the committee; according to the organisation's financial position.

Applicant's Name:.....

Address:.....

Telephone: Home:..... Work:..... Mobile..... **Email:**.....

Species: (Please indicate the species you would like to coordinate)

Time available to perform the role: (This is the time available after all other obligations and commitments such as wildlife caring, work, family, social and recreational have been considered)

.....
.....

Please give details of any skills that you believe you can bring to role. (This could include such things as: Negotiating skills, managing people, coping under pressure, making difficult decisions.)

.....
.....

Please describe what you believe are the most important attributes of a FRW wildlife carer:

.....
.....

What are the minimum standards that you would expect from a carer?

.....
.....

Are you prepared to submit monthly activity reports to the FRW committee?

YES

NO



FAUNA RESCUE WHITSUNDAYS ASSOCIATION INC

ABN 60 931 156 282

FAUNA RELEASE SITE APPLICATION

This information will assist FRW in coordinating a number of release sites for the rehabilitation of fauna.

NAME:.....

ADDRESS:.....

TELEPHONE: Home..... Work..... Mobile.....

EMAIL:.....

1. Do you own or rent the Release Site? Please circle:

Own Rent Other _____

2. Name/s of owner/s of Release Site _____

3. Location of Release Site _____

4. Size of Property (ha) _____

5. Vegetation Type including Regional Ecosystem if known (*e.g. Bloodwood, Brushbox and Poplar Gum woodland with spear grass understorey*)

6. What wildlife do you see frequenting the area? (*e.g. an abundance of agile wallabies*)

7. Size of area available for enclosure for animal rehabilitation/ soft release (m²) _____

8. Is there an existing enclosure which could be used as is or with minor modification?

a. What is it made of and how big is the enclosure (width, length and height).

9 What is the proposed enclosure (materials, width, strength and height)

As a rule it is not acceptable for rehabilitating fauna to be on premises with pets and/or children. However, in some circumstances and with careful planning, their effects may be eliminated.

10. Do you have any pets? Yes No

a. Please list number and type. _____

b. Please list how this/these animal/s will be kept completely segregated from the native fauna in care/ awaiting release. *(e.g. cats are enclosed at all times within house)* _____

11. Are there wandering dogs in the area? Yes No
If so, has council been notified of problem dogs? Yes No

12. Do young children live at or frequent the property? Yes No
How will the fauna in care be kept completely isolated from children and noise? *(e.g. fauna compound is 30 metres away from house, on other side of garage. Children's area of play is on the other side of the house)* _____

13. kinds of fauna release would you like to offer?
a. "Soft Release"
b, "Hard Release"
c. _____

OFFICE USE:

Site suitable Yes No

Suitable for _____





Fauna Rescue Whitsundays Association Inc

4947 3389

P.O.Box 806
Cannonvale 4802

LIST OF CONTACTS FOR MEMBERS as at 25th May 2009

FRW Management Committee

President:

Jacqui Webb
4947 3308(H) 0427 176 966(M)
Email: jacqui.webb@bigpond.com

Vice President:

Cathie Shoemith 49473034(H)
49453998 (WK) 0401033556
Email: attic@bigpond.com

Secretary:

VACANT

Treasurer

Col Forster 4946 1713(H)
0439 762130(M)
Email: col_for@yahoo.com

OTHER COMMITTEE MEMBERS

Rebecca MacRae: 4946 4988(H)
0427 675507
Email: firstagency@bigpond.com

Lola Mudie: 07 4946 1281

Events Co-ordinator:

TBA

Fundraising:

TBA

NON COMMITTEE POSITIONS

Food Supplies:

Linden Baker
4946 1198

Species Liaison Officers:

Koalas/Birds/Raptors: Jacqui Webb
4947 3308 0427 176 966
Email: jacqui.webb@bigpond.com

Kangaroos/Wallabies/Bettongs/

Bandicoots/Bats/Echidnas:

Cathie Shoemith 49473034(H)
49453998 (WK) 0401033556

Possums/Gliders:

Lynne Clarke:
4946 5736(H) 0408 436551
Email: clarke.lynne@bigpond.com

Reptiles/Koalas:

Linden Baker 4946 1198

Bowen Area: All species

Carol Cosentino: 4785 5497

Website Editor: Gerry O'Connor

4947 3180
Email: goconnor@draget.com.au

Records

TBA

Grants

TBA

Fundraising Assistant

TBA

Newsletter Editor/Photo/

Phone Roster/Membership Officer:
Sandy Cleeland 49473324
Email: sandyc19@bigpond.com

FRW Website

www.frw.org.au

FRW Animal Records

Go into the FRW site and click on
animal records on the bottom bar

QPW

Jubilee Pocket
4967 7355

MARINE STRANDINGS

1300 130372

POLICE

Whitsunday
4948 8888 (24hrs)
Proserpine
4945 1333
Bowen
4761 3500
Collinsville
4785 5377

RSPCA Mackay

4953 4265

WHITSUNDAY SHIRE COUNCIL

4945 0200

SNAKE, POSSUM & SWOOPING BIRD RELOCATION

Peter Basso (fee charged)
0439 478140

VETERINARY SURGERIES

Whitsunday Vet Clinic
Julie Ruddell
29 Sugarloaf Rd
CannonValley
49461028

Orchid Valley Vet Surgery
Mark Williams
Cnr Shute Hbr Rd & Orchid Valley Rd
Cannonvale
49 461631

Proserpine Veterinary Surgery
Bill Bowman
Faye McPherson
11 Waite St
Proserpine
4945 1878



**Fauna Rescue Whitsundays
Association Inc
4947 3389**



**Fauna Rescue
Whitsundays
Association Inc.
4947 3389**

**P. O. Box 806
Cannonvale 4802 QLD**

Caring for the Whitsundays Wildlife